

The background of the slide is an aerial night photograph of a city, likely Taipei, showing a highway with light trails from traffic. A network of white lines connects various points across the city, with several circular icons overlaid on these points. The icons include a location pin, a fuel pump, a Wi-Fi symbol, a compass, and a shield. The overall color palette is dark with warm tones from the city lights.

EUPFIN Technology Co., LTD.

www.eup.com.tw



Contents

- 2** Introduction
- 3** Global Coverage
- 4** Milestone
- 5** Team
- 6** AIoT Smart Transportation
- 7** Real-Time Monitoring / Route History
- 8** Statistics Report
- 9** Abnormal Report And Notification
- 10** Eup APPs
- 11** GPS Tracker
- 12** MDVR/ Dashcam
- 13** Tachograph
- 14** Trailer Management
- 15** Cold Chain Management
- 16** Driver Safety
- 17** Smart Box
- 18** Industry-Based Solution
- 19** Our Clients
- 20** Links

Introduction

Eup is committed to becoming a role model in the field of "intelligent transportation management". We combine "fleet management system" and "safe driving management" to reduce accidents and improve fleet safety.

Top-Notch Team

- Professional staff training
- Customer service around-the-clock



Taiwan

160
employees



24 hour
customer service

Capability

- Hardware and software R&D team
- One-stop service

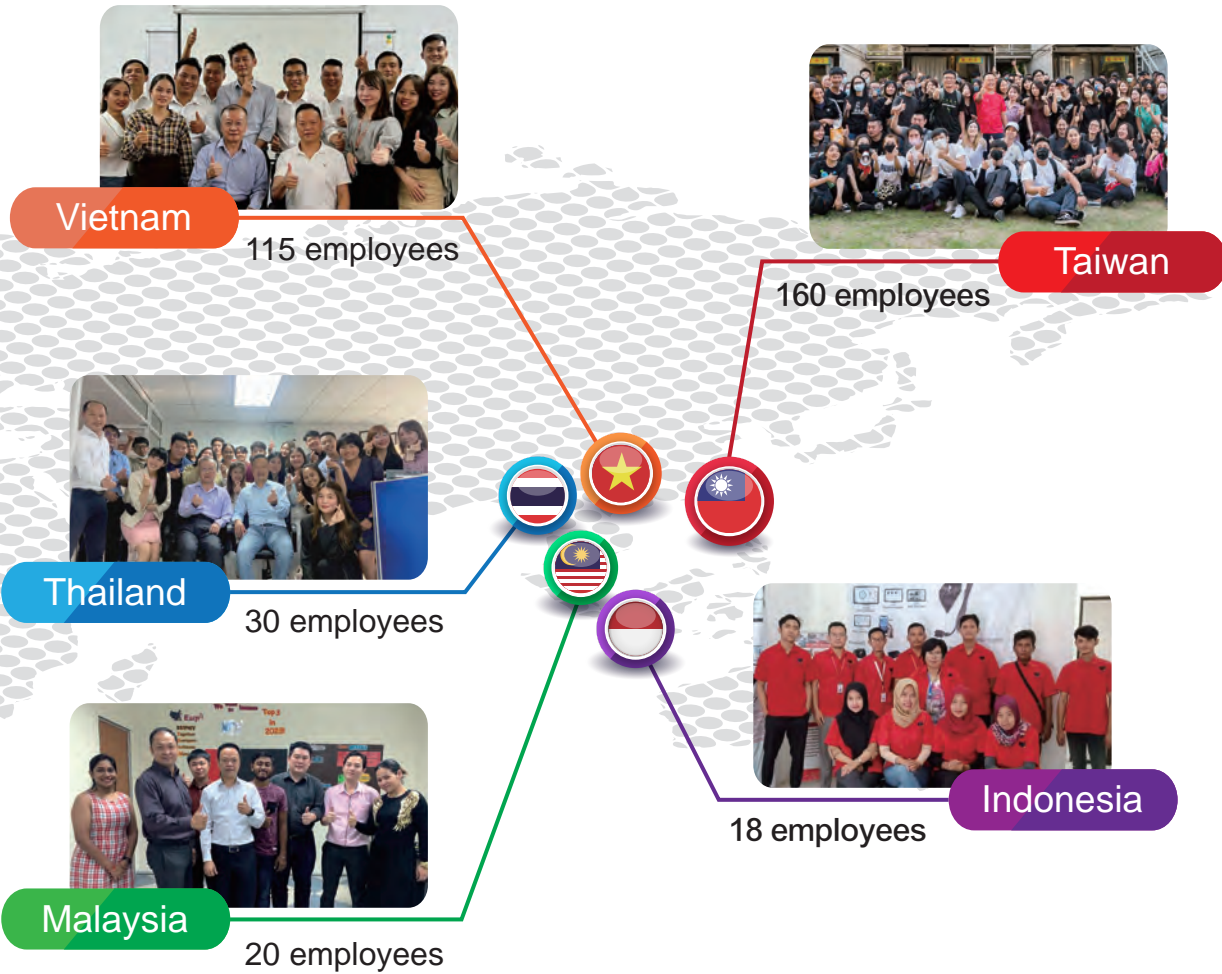


100
thousand
vehicles online

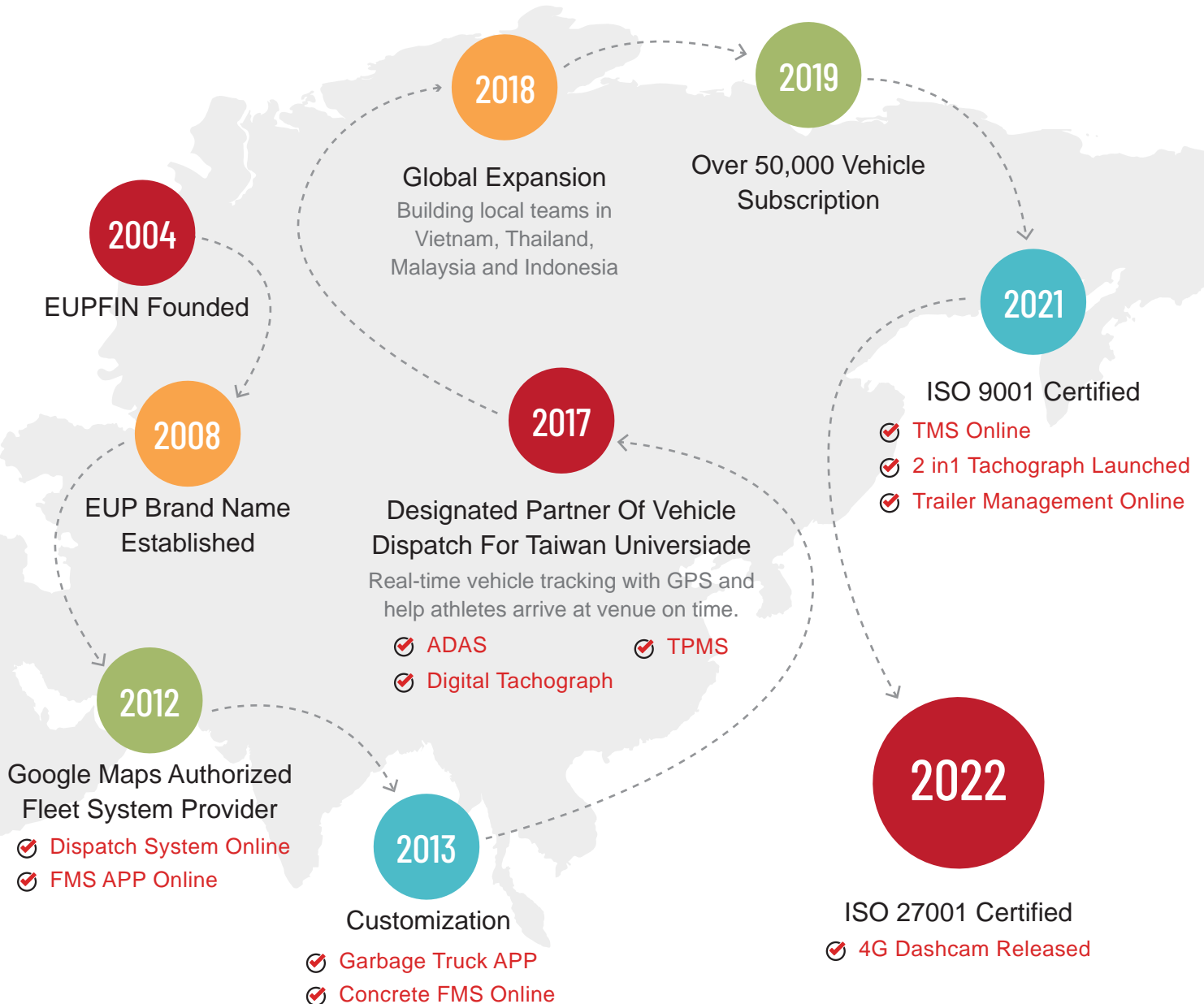


100
million
GPS data per day

Global Coverage



Milestone



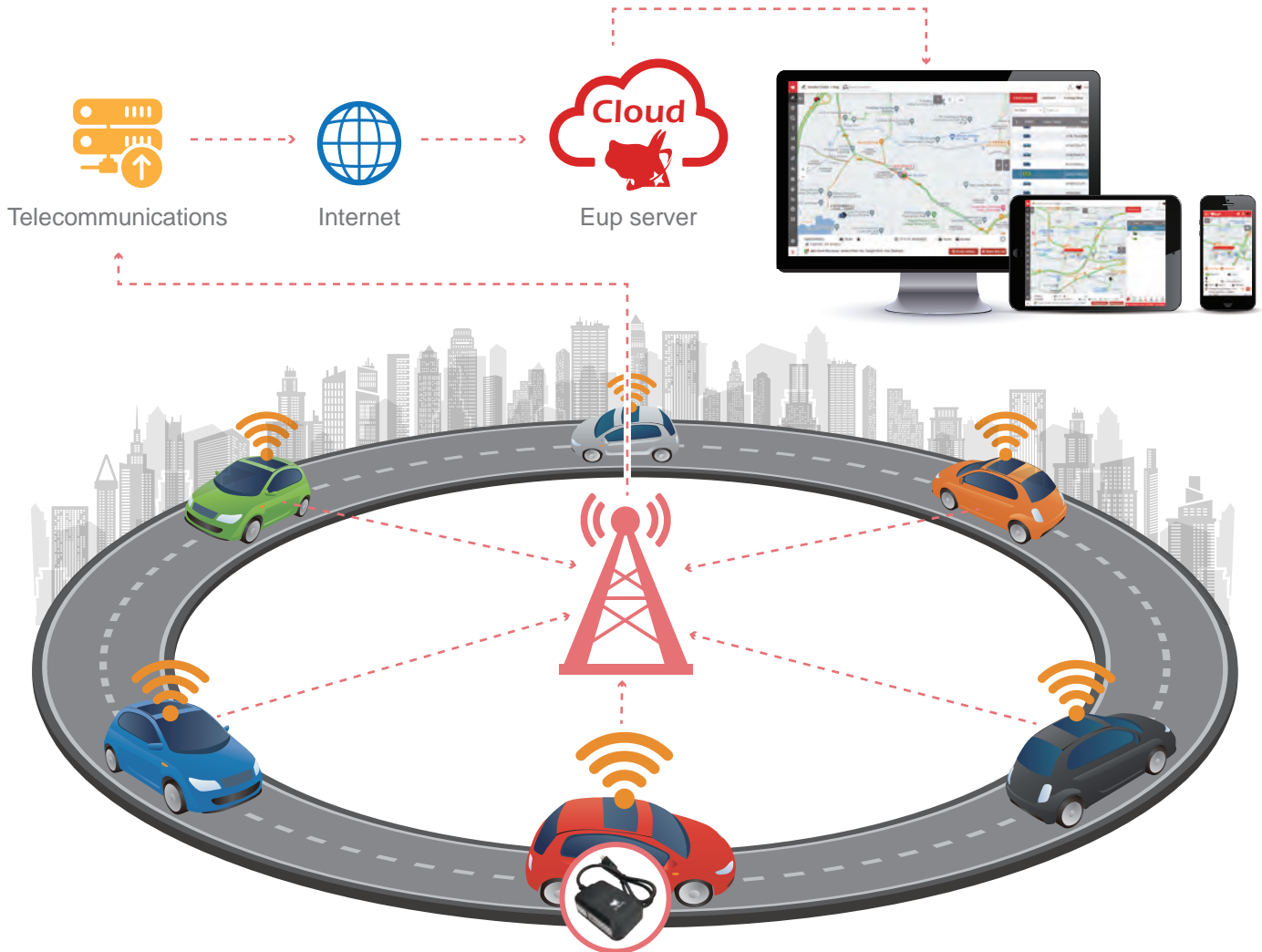
Team





AIoT Smart Transportation

We utilize advanced AIoT technology to transmit vehicle data and driver information via wireless networks and provide analysis through algorithms to offer smart fleet management and safe driving solution.



01 Real-Time Monitoring / Route History

Cloud-based data storage for one year and online accessibility any time.



Monitor Center

Intuitive color recognition for vehicle status

List of real-time vehicle status

Satellite view, street view

Multi-Vehicle Monitoring



Route History



02 Statistics Report

We have developed over 100 types of tables, graphics, and customized reports to fully present the day-to-day operation of the fleet and driver.

Report

- ▶ Driving status table
- ▶ Highway billing
- ▶ Travel report
- ▶ Vehicle maintenance
- ▶ Mileage report
- ▶ Fuel consumption analysis
- ▶ Landmark report
- ▶ Summary report



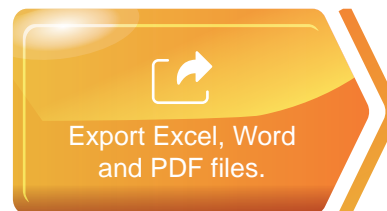
Graphics

▶ Safety dashboard

By analyzing driving habits with big data, safety score can be generated as reference for employee performance evaluation.

- ▶ Driving status table
- ▶ Temperature chart

User-Friendly Interface



03 Abnormal Report And Notification

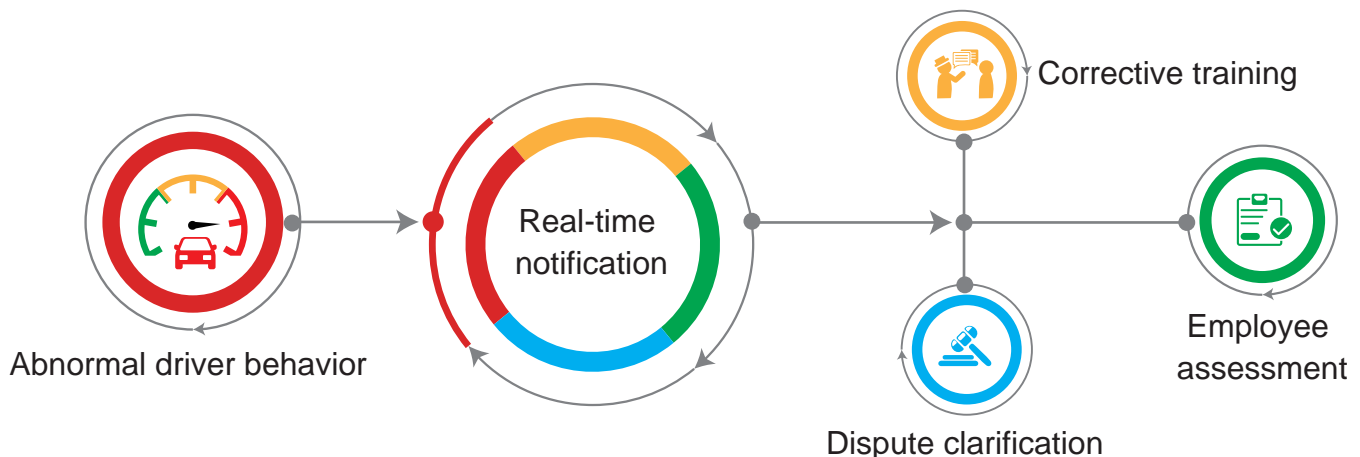
Managers can be notified of fleet abnormality in real time

Abnormal Report

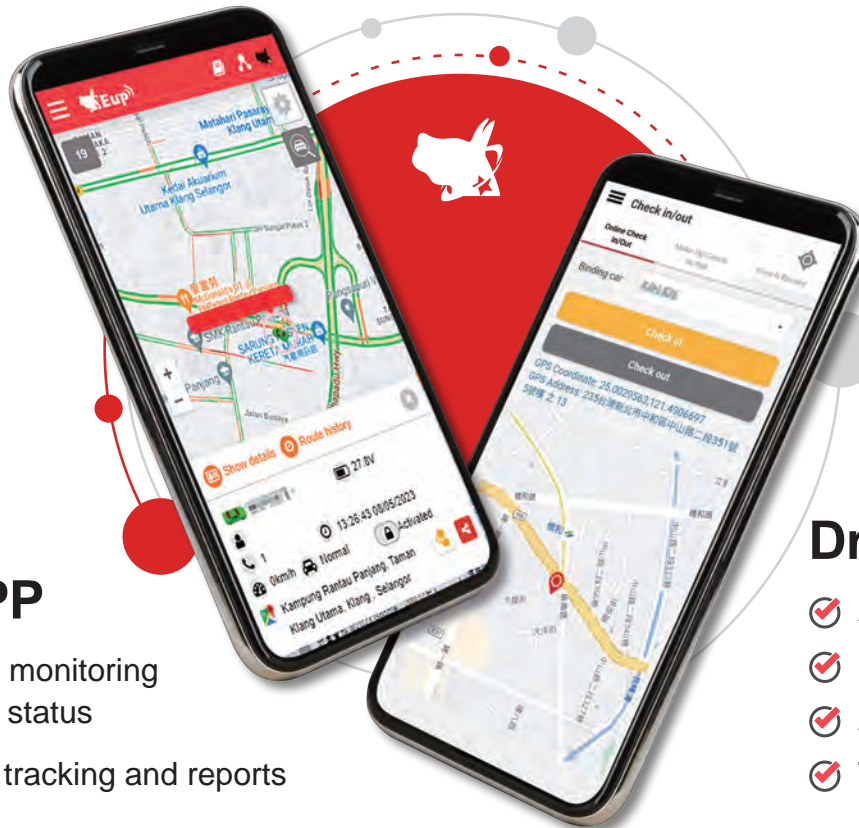
- ▶ Speeding
- ▶ Harsh acceleration/braking
- ▶ Speeding 、 idling
- ▶ Behavior report
- ▶ Geofencing



Abnormal alerts and records can significantly enhance fleet safety



04 Eup APPs



FMS APP

- ✓ Real-time monitoring of vehicle status
- ✓ Historical tracking and reports

Driver APP

- ✓ Attendance record
- ✓ Self-inspection checklist
- ✓ Alcohol test
- ✓ Task feedback

GPS Tracker

Installation of GPS tracking devices allows administrators to remotely monitor vehicle locations and activities through the fleet management system. This includes tracking instances such as speeding, idling, sudden acceleration, and deceleration. It can assist in reducing personnel and phone expenses while enhancing work efficiency.



S168-4G

An entry-level device for fleet management, suitable for various industries and vehicle types.



R007T

Installation-free, portable tracker that can be used after charging.



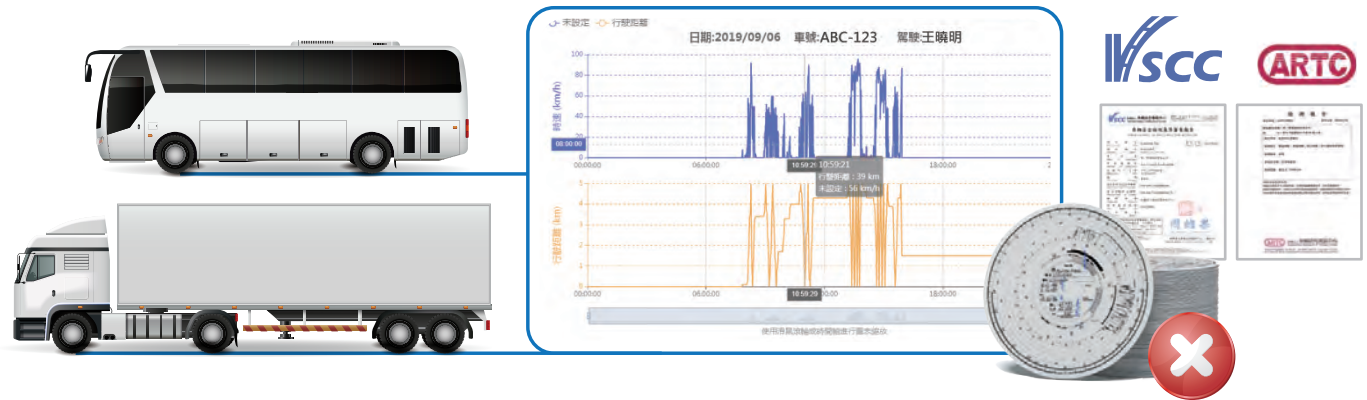
MDVR/ Dashcam

By installing exterior cameras on vehicles, it helps avoid blind spots in the driver's field of vision, significantly reducing the occurrence of traffic accidents. It can also serve as evidence for work scheduling management and accident investigations. Manager can remotely view live video in real-time or download video files.



Tachograph

The digital tachograph is certified by VSCC and ARTC, complying with traffic regulations. Online printing of the driving records carries legal validity. It replaces the traditional tachograph paper, automatically recording the vehicle's travel trajectory. This not only saves manpower and paper costs but also prevents drivers from being penalized for forgetting to insert or change the tachograph paper.



Tachograph



Applicable for commercial vehicles weighing 8 tons or above, including both trucks and buses.

16-1 Tachograph



Mandatory installation for all types of commercial buses and trucks manufactured after January 1, 2023.

EPA Tachograph



Suitable for transporting waste, earthwork materials, and hazardous substances.

Trailer Management

Previously, after separating the tractor from the trailer, it was necessary to rely on human memory or handwritten records to track the location of the trailer. With the trailer management system, the locations of the tractor and trailer can be easily tracked, greatly improving dispatch efficiency and making vehicle scheduling much easier!



Trailer Record

Record when connecting/detaching occurs as well as the mileage traveled.



Abnormal Detachment Alarm

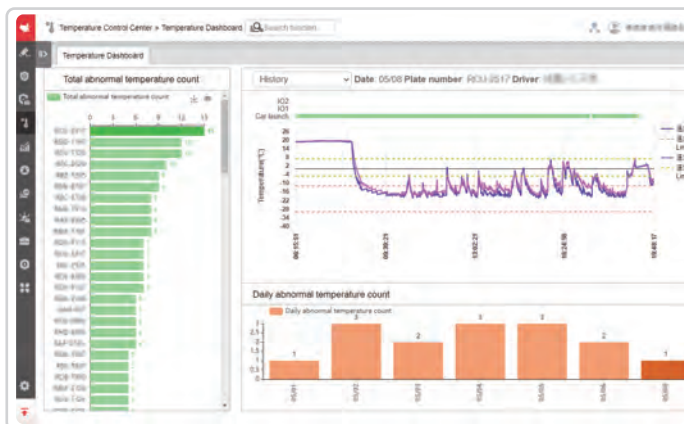
Immediate notification while the trailer and tractor detach outside of the designated area.



Maintenance Reminder

Thoughtful reminder for trailer maintenance to increase service life span

Cold Chain Management

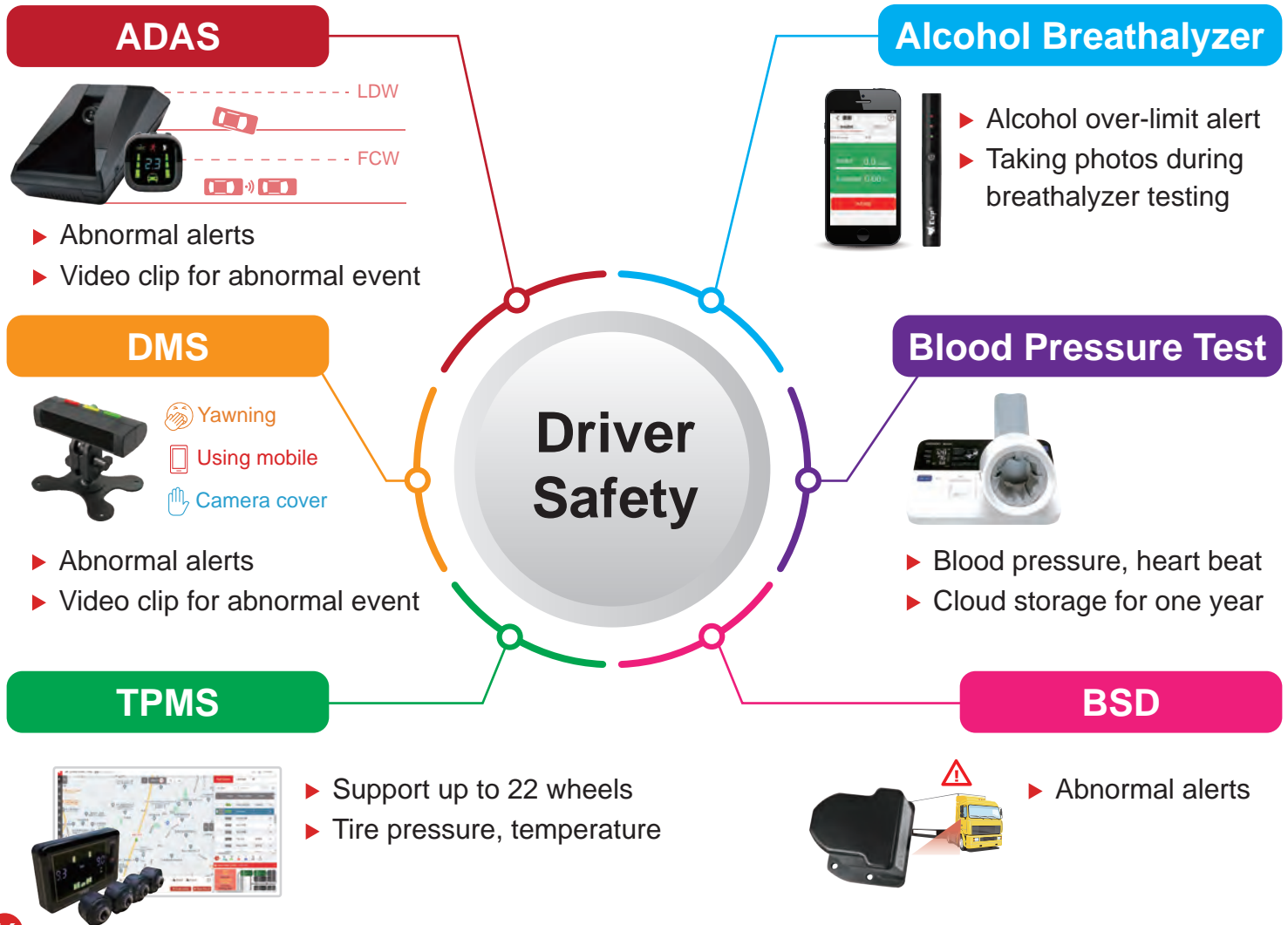


Temperature Monitoring

- Temperature dashboard
- Temperature report
- Temperature curve chart
- Abnormal notification

Driver Safety

By monitoring the driver's alcohol and fatigue level and assisting the driver in detecting road and vehicle conditions, manager can take proactive measures to prevent traffic accidents.



Smart Box



Industry-Based Solution

EUP has extensive experience in fleet management and can provide solutions tailored to different industries or specific management needs.



Shuttle Bus Management

Passengers can view real-time information of the bus and receive notifications when the bus is approaching the station.



Garbage Truck Tracking

Citizens can inquire about the location, route and estimated arrival time of garbage trucks online.



EV & Charging Pile

The comprehensive solution includes operational management for shared mobility vehicles and charging stations, as well as a user-centric app for vehicle rentals and charging.

Other Services

Concrete sensor



TSA lock



Fuel card



Our Clients



| | |
|----------------------|------------------------------------|
| Tourism Industry | Ranked No.1 in market share |
| Concrete Mixer Truck | Over 3000 customers in Taiwan |
| Garbage App | Nearly 90 towns deployed in Taiwan |




Ministry Of Foreign Affairs



Kuo-Kuang Motor Transportation



Bureau Of Labor Insurance



Kuoshun Ready-Mixed Concrete Co., Ltd.



Department of Environmental Protection, Taipei City Government



Universal Cement Corporation



Taiwan Railways Administration



Taipei Medical University



SGS Taiwan



National Yang Ming Chiao Tung university




Yuen Foong Yu Group



University of Kang Ning



King Car Group



Tungs' Taichung Metroharbor Hospital



Sannkuen Co., Ltd.



Yilan City Cleaning Team



Lion Travel



Miaoli City Cleaning Team

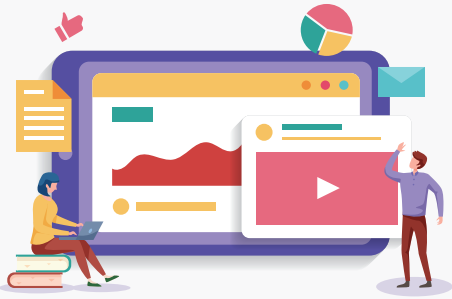


South East Travel



Hualien County Cleaning Team

Links



Web Links



Eup
Website



Eup Official
Youtube



Garbage Truck
Website



APP Links



FMS
APP



Drivers'
APP



Garbage Truck
APP



EUPFIN Technology Co., LTD.

📍 8F., No.351, Sec. 2, Zhongshan Rd.,
Zhonghe Dist., New Taipei City.

☎ 0800-060-958

✉ service@eup.com.tw

🌐 www.eup.com.tw